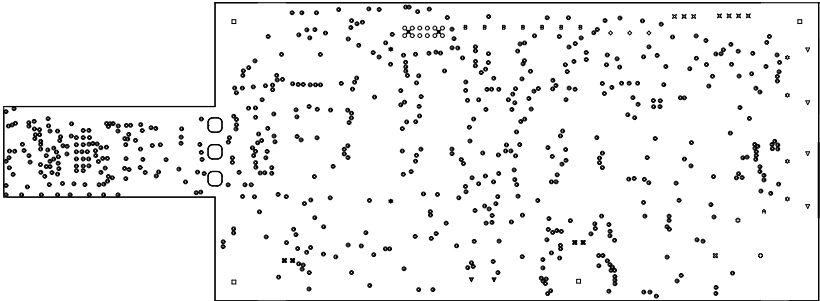


Symbol	Count	Hole Size	Plated	Hole Type	Hole Tolerance (+)	Hole Tolerance (-)	Hole Length
⌘	1	39.37mil (1.000mm)	PTH	Rectangle	3.94mil (0.100mm)	3.94mil (0.100mm)	137.79mil (3.500mm)
A	1	40.00mil (1.016mm)	PTH	Round	3.00mil (0.076mm)	3.00mil (0.076mm)	-
⌘	2	23.62mil (0.600mm)	NPTH	Round	3.00mil (0.076mm)	3.00mil (0.076mm)	-
▽	2	33.47mil (0.850mm)	NPTH	Round	3.00mil (0.076mm)	3.00mil (0.076mm)	-
⊕	2	39.37mil (1.000mm)	PTH	Rectangle	3.94mil (0.100mm)	3.94mil (0.100mm)	118.11mil (3.000mm)
★	2	40.16mil (1.020mm)	NPTH	Round	2.00mil (0.051mm)	2.00mil (0.051mm)	-
◇	3	43.31mil (1.100mm)	PTH	Round	3.00mil (0.076mm)	3.00mil (0.076mm)	-
⌘	4	7.87mil (0.200mm)	PTH	Round	3.00mil (0.076mm)	3.00mil (0.076mm)	-
▽	4	23.62mil (0.600mm)	PTH	Slot	3.00mil (0.076mm)	3.00mil (0.076mm)	51.18mil (1.300mm)
☆	4	33.47mil (0.850mm)	PTH	Round	3.00mil (0.076mm)	3.00mil (0.076mm)	-
□	4	118.11mil (3.000mm)	PTH	Round	3.00mil (0.076mm)	3.00mil (0.076mm)	-
⌘	7	23.62mil (0.600mm)	PTH	Round	3.00mil (0.076mm)	3.00mil (0.076mm)	-
B	7	40.16mil (1.020mm)	PTH	Round	3.00mil (0.076mm)	3.00mil (0.076mm)	-
○	12	22.05mil (0.560mm)	NPTH	Round	3.00mil (0.076mm)	3.00mil (0.076mm)	-
⊙	603	8.00mil (0.203mm)	PTH	Round	3.00mil (0.076mm)	3.00mil (0.076mm)	-
	658 Total						

Slot definitions : Routed Path Length = Calculated from tool start centre position to tool end centre position.
Hole Length = Routed Path Length + Tool Size = Slot length as defined in the PCB layout



ALL ARTWORK VIEWED FROM TOP SIDE	BOARD #: PROC177	REV: B	SUN REV: Not in version control
LAYER NAME = Drill Drawing	TID #: N/A		
PLOT NAME = Fabrication Drawing 2	GENERATED : 1/18/2024 12:14:01 PM		TEXAS INSTRUMENTS